

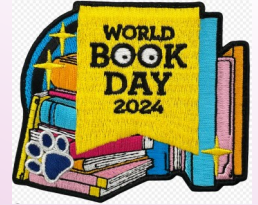


1 March 2024

GORDONBROCK WEEKLY

Dear Parents/Carers,

We started the week with an amazing win in the Year 3 and Year 4 Football Tournament on Monday! Congratulations to all the children that participated and thank you to Miss Aylward and Jason for supporting them. I am also delighted to announce that for a second week in a row, punctuality has improved across the school.



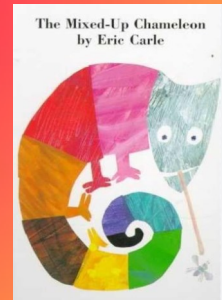
Next Friday, we celebrate World Book Day as well as International Women's Day. This year's theme for International Women's Day is 'Inspire Inclusion'. The theme emphasises the importance of diversity and empowerment in all aspects of society. In today's KS1 and KS2 assemblies, we started to explore this year's theme, looking at how everyone in the community can help to support the inclusion of women by supporting the needs, interests and aspirations of women around the world. As your children to 'step forward in solidarity'.



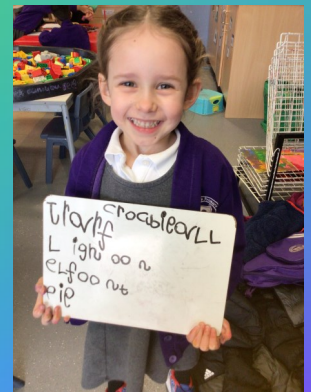
Finally, we welcomed back Year 5 (slightly wetter and muddier than they left) from School Journey, who looked thrilled to be back after an exciting week of activities!

Enjoy your weekend—see you on the gate on Monday!

Mrs Wright

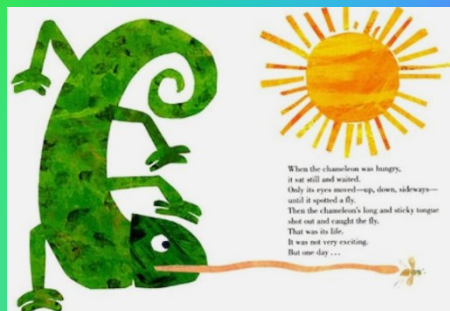


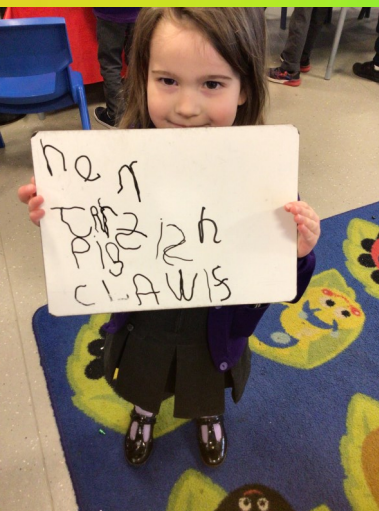
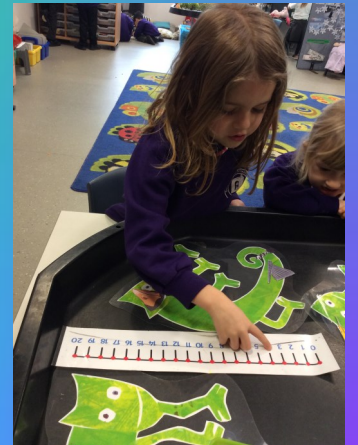
Reception children are very excited to be learning all about Animals this half-term! We have worked with the book by Eric Carle, *The Mixed Up Chameleon* and we explored characteristics of chameleons. We have learned about camouflage by creating our own backgrounds to then blend our chameleons into. In maths, we learned how to add different body parts to find out the totals. We even wrote facts about chameleons - all independently! We have enjoyed learning about other animals too and are looking forward to our trip to Battersea Zoo in less than two weeks!



If you don't know the story, why not watch it online together as a family! Just link on the link below:

<https://www.youtube.com/watch?v=EhZ5h3sOEB4>





Year 4

This week in Year 4, we have been preparing and planning to write our own non-chronological report on a mythical creature. To do this, we have created our own mythical creatures.

We decided what our mythical creature will look like and used descriptive language to help the reader imagine what it looks like.

We have also designed our own habitat for our mythical creature by using a story corner to re-create its habitat. These will help us to describe the habitat in our final reports.

Next week, we will look at what we think our creature's diet will be as well as interesting facts to include in our report writing.

◀◀◀◀◀



Why not find out about some of these mythical creatures to help you generate some ideas for your own creature?



Year 6

It has been another very busy week in Year 6. In English, we have started learning about the importance of well-written dialogue in order to write our own Flash fiction stories. The children have been learning how to use dialogue to convey character and to advance the action. They have looked at the idiosyncrasies of various characters and the use of action beats before, between and after dialogue. We have been learning percentages, fractions, algebra, angles and co-ordinates in Maths.

In Science, we have continued our Evolution and Inheritance topic by learning how an animal's ability to survive its environment allows it to pass on genetic variations. We participated in an activity in which we recreated the conditions for survival of the peppered moth.

We became archaeologists in History, using evidence to make predictions.

In Indoor P.E., we have been focusing on developing core strength and travelling in gymnastics. We have been challenging ourselves to build our stamina and strength during circuit training in outdoor P.E.

In Art, we have continued to look at the work of Sir Peter Blake with a view to creating our own of silk-screen print. In DT, we have collaborated in creating research boards for our Night Light project.

Our team leaders and conductors have been taking the lead during samba drumming lessons, planning warm-ups and main activities for us to have a go at.



Give
it a go

Why not try and have a go at the Daily 10 at home? A quick fire way to recap lots of different maths basic skills, including fractions, rounding, ordering and place value.

Don't worry parents, the programme gives you the answers at the end! <https://www.topmarks.co.uk/maths-games/daily10>

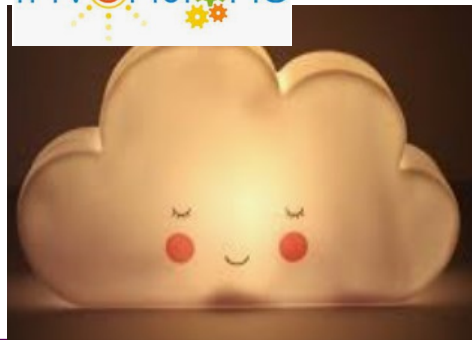
Year 6



FEEL THE BURN



inventions



Lexia Superstars: Well done to all of the children who have been on the Lexia programme over the past week. Special congratulations to the following children who completed a level during the past two weeks!



Therapeutic Parenting Course

Our Therapeutic Parenting group is for parents who are concerned their child may have ADHD, or behaviours that make places and spaces unsafe to be in, or cause serious harm to themselves and others.



Help improve:

- Your child's self-esteem & mental health
- Relationships
- Resilience and stress
- Your confidence as a parent

Learn alongside other parents about:

- Why taking the time to play is important.
- How different language can help to manage emotions.
- How to creating and enforcing boundaries.
- How to help your child calm down
- Recognising the positives and how praise helps
- How incentives can help with behaviour change.
- Understanding consequences and how and when they are helpful.



Age group: 4-11 years

"Before I came onto these sessions I used to think there was something wrong with my child but after coming onto these sessions I learnt something about myself" - parent

To enquire about our upcoming courses please email enquiries@lewishamcfc.org.uk or call 07377 724243



www.lewishamcfc.org.uk

@lewishamchildrencentres @lewishamcfc



Lewisham Services

Family Support Service:

The Family Support Service provides intensive, practical support to families in their own homes as part of a six-month programme that aims to help them:

Build resilience

Set achievable goals

Develop positive relationships

<https://lewisham.gov.uk/myservices/socialcare/health/parenting/being-a-parent/support-for-parents-and-carers>

Article of the Week

UN Convention on the Right of the Child

We are very proud to be a Unicef Rights Respecting School, having achieved the **Unicef UK Silver - Rights Aware Award**.

To help children carry on the discussion at home, we will be focussing different articles of the convention in each newsletter so that our families can explore the rights and meanings together.

Article 29 - Aims of Education

Children's education should help them fully develop their personalities, talents and abilities. It should teach them to understand their own rights, and to respect other people's rights, cultures and differences. It should help them to live peacefully and protect the environment.



PUPIL PREMIUM (Free School Meals)

If any of the following applies to you, you can apply for free school meals for your child.

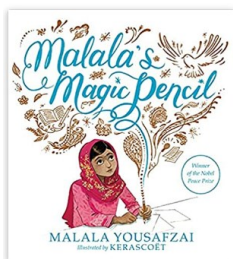
- ◆ Universal credit with an earnings threshold that does not exceed £7400
- ◆ Income support
- ◆ Income based job seekers allowance
- ◆ Income related employment and support allowance
- ◆ Child Tax Credit, provided you are not entitled to working tax credit and have an annual income, as assessed by HMRC that does not exceed £16,190

<https://lewisham.gov.uk/my services/education/student-pupil-support/free-school-meals-and-extra-support-for-your-child>



Mrs. Wright's Recommended Reads

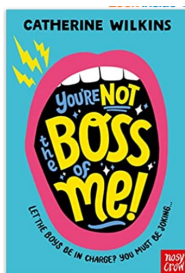
Malala's Magic Pencil written by Malala Yousafzai and illustrated by Kerascoët



Age 4-8

As a child in Pakistan, Malala made a wish for a magic pencil. She would use it to make everyone happy, to erase the smell of garbage from her city, to sleep an extra hour in the morning. But as she grew older, Malala saw that there were more important things to wish for. She saw a world that needed fixing. And even if she never found a magic pencil, Malala realized that she could still work hard every day to make her wishes come true.

You're Not the Boss of Me! written by Catherine Wilkins



Age 9-12

Amy Miller is a very positive person and she is fully prepared to be the star of the school Comedy Show. But when Harry is put in charge, he stops her from performing or writing or doing anything fun. Amy can't understand what's happening until her sister tells her: Harry is being sexist, and Amy must take a stand. Armed only with killer one-liners, Amy goes into battle to fight for her right to make people laugh.



Family Information Service

Family Information Service is currently conducting a parent survey regarding the national wraparound childcare program.

They have reported to us that parents should expect to see an expansion in the availability of wraparound care from September 2024.

They have asked us to share this link with the community to help better understand the needs of the children in Lewisham:

<https://forms.office.com/e/dEyXVG9zwF>

Thank you for taking the time to complete this survey in advance.

Lewisham parent/carer wraparound childcare survey



UNIFORM

School uniform can be ordered on ParentPay.

Orders placed between Thursday 8.30am and Tuesday 8.30am will be delivered to class on Tuesday.

Orders placed between Tuesday 8.30am and Thursday 8.30am will be delivered to class on Thursday.

All orders will be sent to class for your child to take home.

BIRTHDAY TREATS

Please note we are **not** currently accepting any treats to share with the class in celebration of birthdays.



Lateness

Arriving late into school can affect your child's attendance. Since September there have been 141 hours and 50 minutes lost to lateness.

Lateness = lost learning (Figures below are calculated over a school year)	
5 mins late each day	3 days lost!
10 mins late each day	6.5 days lost!
15 mins late each day	10 days lost!
20 mins late each day	13 days lost!
30 mins late each day	19 days lost!

Don't let your child miss out!

Get your child to school on time. If they are late they have a bad start to the day. If your child arrives late for class:

- They miss out on important learning.
- They don't have the social time to settle into class.
- It can be embarrassing for them.
- It may disrupt the learning of the rest of the class.

What you can do:

- Have a regular routine for the start of each day.



Pupils and parents can access over 1000 levelled e-books at home with the Big Cat e-book library. perfect for children to practise reading books at the right level at home. To login in to the Collins Big Cat library use the link below and enter your child's username and password: <https://ops.collinsopenpage.com/ssl/login?service=https%3A//ebooks.collinsopenpage.com/wr/index.html&eulogin=true>

When it comes to times tables, speed AND accuracy are important – the more facts your child remembers, the easier it is for them to do harder calculations. Times Table Rock Stars is a fun and challenging programme designed to help students master the times tables!



The children should go to <https://play.ttrockstars.com/auth/school/student/3584> and login using their login details.

Little and Often: In order to get the best out of Times Tables Rock Stars children should regularly play for short bursts so we would ask you to allow your child to play for 5-10 minutes at a time.

If your child cannot remember their login details please contact the school office who will be able to send a reminder home.

We endeavour to be a **NUT AND SESAME-FREE SCHOOL**

Please help us to achieve this aim by not sending any nuts or nut containing products into school. This extends to sesame seeds, too. Thank you for your support in this matter.



IMPORTANT DATES

05/03/24	Year 4 Assembly
08/03/24	World Book Day and International Women's Day
08/03/24	Swimming Gala
13/03/24	Reception Trip to Battersea Zoo
14/03/24	Phonics Event for Reception Parents only
14/03/24	Red Nose Day
22/03/24	FOG Spring Disco
26/03/24	Year 3 Parent Event
27/03/24	Last day of Spring term for pupils
28/03/24	INSET DAY (school closed to pupils)
29/03/24 - 12/04/24	Easter Holidays
15/04/24	First Day of Summer Term 1
18/04/24	Year 2 Assembly
06/05/24	Bank Holiday (school closed to pupils)
27/05/2024 - 31/05/24	Half -Term
03/06/24	First Day of Summer Term 2 — INSET DAY (school closed to pupils)
25/07/24	Last Day of Term - INSET DAY (school closed to pupils)